

TROLLEY SQUARE

1525 Old Trolley Road, Summerville, SC 29485



Trolley Square is a great neighborhood center located on a major thoroughfare just minutes from downtown Summerville, one of Charleston's fastest growing suburban communities. Trolley Square benefits from the draw of it's shadow anchors, Publix and CVS Pharmacy, and enjoys exceptional cross access between the properties.

In addition to available shop spaces, a 3.782 acre ground lease or build-to-suit opportunity currently exists. Now is your time to become part of this thriving community.

Retail Space Available:

1,768 SF | 3.782 Acres

Center Type:	Neighborhood Center
Retail GLA:	33,468 SF
Year Built:	1995
Features:	Dedicated Turn Lane Pylon Sign
Parking:	171 Surface Spaces
Traffic Counts:	28,100 AADT on Old Trolley Road
Shadow Anchors:	



National/Regional Tenants: Spectrum Great Clips



Demographics	1 Mile	3 Mile	5 Mile
Population 2016	11,120	58,592	122,798
Population 2021	11,814	64,328	135,327
Total Households	4,368	21,892	45,726
Average HH Income	\$65,227	\$70,775	\$70,709



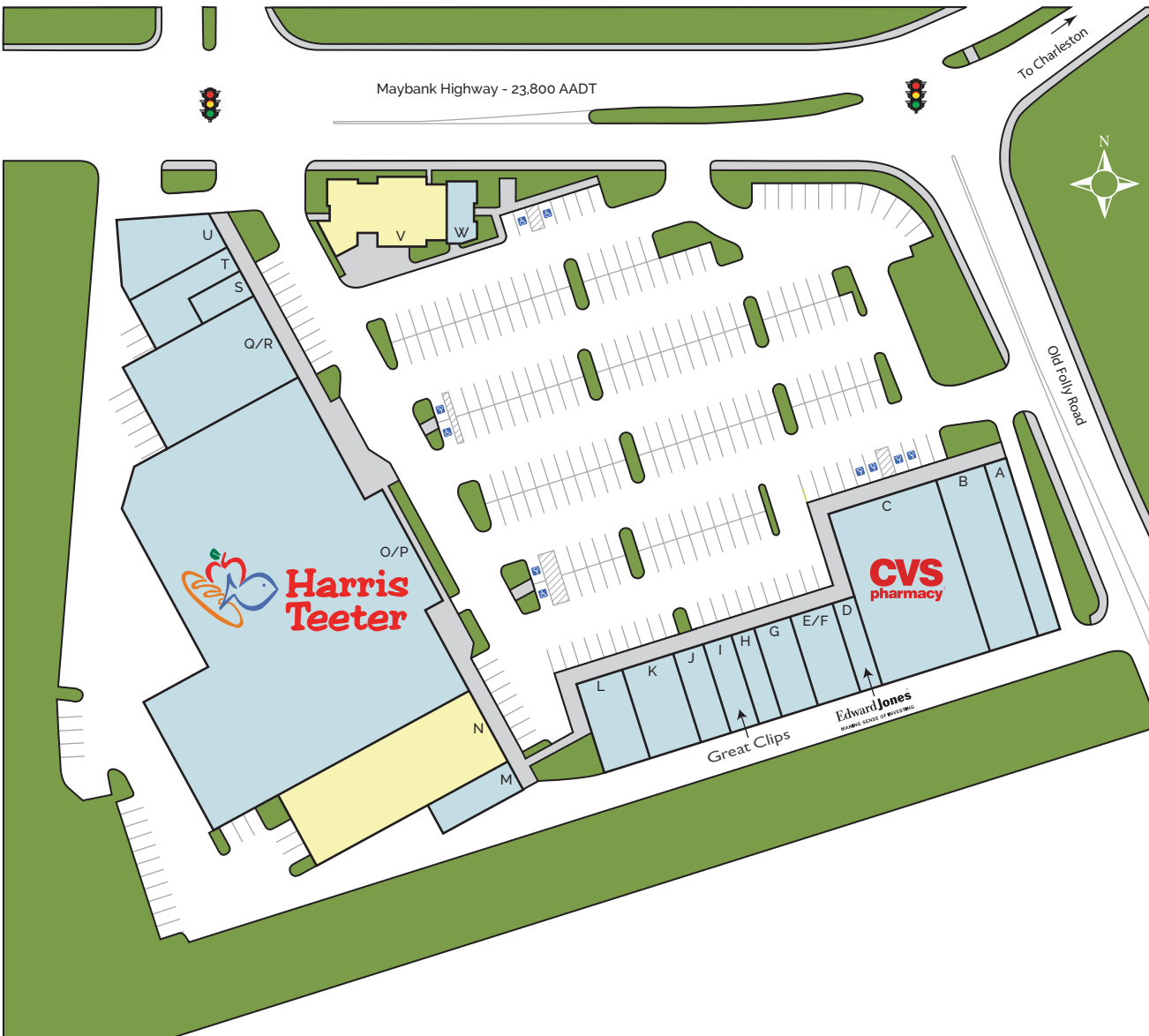
6824 Elm Street, Suite 200, McLean, VA 22101
ph: 703.821.0500 | fax: 703.442.7545 | BeattyCos.com

LEASING CONTACT

Elyse Welch, CCIM | 843.203.1111 | EWelch@lee-associates.com
John Orr, CCIM | 843.793.6974 | JOrr@lee-associates.com
Lindsey Halter | 843.277.4322 | LHalter@lee-associates.com

JAMES ISLAND CENTER

1739 Maybank Highway, Charleston, SC 29412

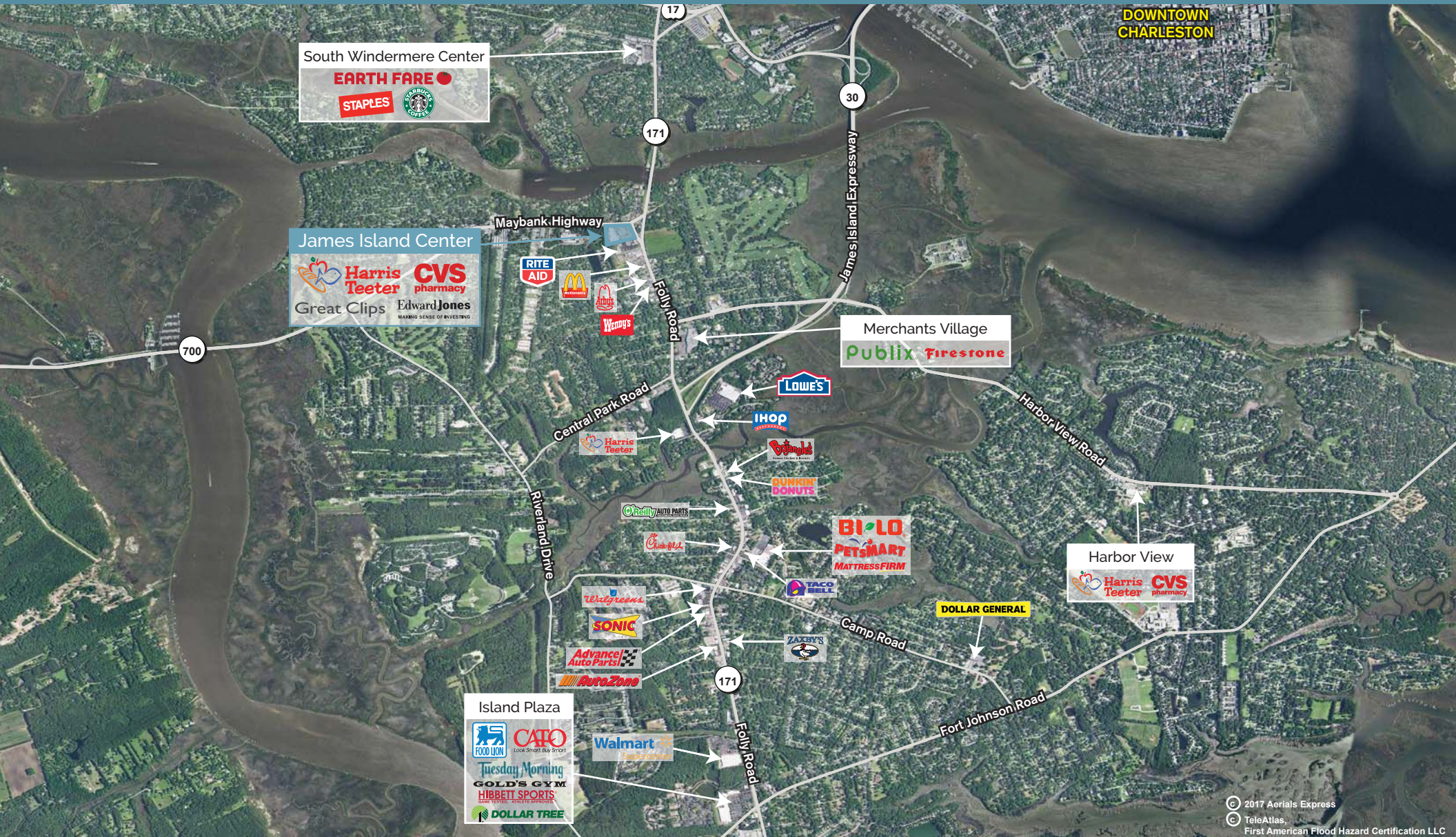


Space	Tenant	SF
A	Barberitos	1,800
B	Ammons Dental By Design	4,050
C	CVS Pharmacy	9,150
D	Edward Jones	900
E/F	Willow Salon	1,800
G	Amalfi's Restaurant	1,500
H	Tilted Glass	965
I	Great Clips	1,200
J	City Nail Spa	1,240
K	Pho Saigon	2,100
L	Club Pilates	1,860
M	Cory's Grilled Cheese	1,260
N	Available	7,491
O/P	Harris Teeter	41,500
Q/R	Exemplar Fitness	6,000
S	Health Smart	713
T	European Wax Center	1,820
U	Maple Street Biscuit	2,790
V	Available	3,200
W	Muddy Waters	800

LEASING CONTACT

JAMES ISLAND CENTER

1739 Maybank Highway, Charleston, SC 29412



© 2017 Aerials Express
© TeleAtlas,
First American Flood Hazard Certification LLC



6824 Elm Street, Suite 200, McLean, VA 22101
ph: 703.821.0500 | fax: 703.442.7545 | BeattyCos.com

LEASING CONTACT

Elyse Welch, CCIM | 843.203.1111 | EWelch@lee-associates.com
John Orr, CCIM | 843.793.6974 | JOrr@lee-associates.com
Lindsey Halter | 843.277.4322 | LHalter@lee-associates.com