

JAMES ISLAND CENTER

1739 Maybank Highway, Charleston, SC 29412



James Island Center is located at the intersection of Maybank Highway and Folly Road, a prime corner at a high traffic intersection as you enter James Island from West Ashley. There are several entrances to the property for easy access from both Maybank Highway and Folly Road.

Anchor tenants include Harris Teeter and CVS. Other noteworthy tenants include Pet Supplies Plus, Great Clips and Edward Jones.

Retail Space Available:

713 SF | 900 SF | 3,000 SF | 3,000 SF

Center Type: Community Center
Retail GLA: 90,993 SF
Year Built: 1975 | Harris Teeter 2015
Features: Signalized Intersection
 Dedicated Turn Lane
 Pylon Sign
Parking: 295 Surface Spaces
Traffic Counts: 30,700 AADT on Maybank Highway
 29,600 AADT on Folly Road
Anchor Tenant:



National/Regional Tenants: **PET SUPPLIES PLUS**
GREAT PRICES. NO BEGGING.
Edward Jones
MAKING SENSE OF INVESTING **Great Clips**

Demographics	1 Mile	3 Mile	5 Mile
Population 2023	7,496	60,503	127,975
Population 2028	7,997	62,655	134,358
Total Households	3,633	27,531	58,224
Average HH Income	\$117,889	\$115,669	\$109,199



6824 Elm Street, Suite 200, McLean, VA 22101
 ph: 703.821.0500 | fax: 703.442.7545 | BeattyCos.com

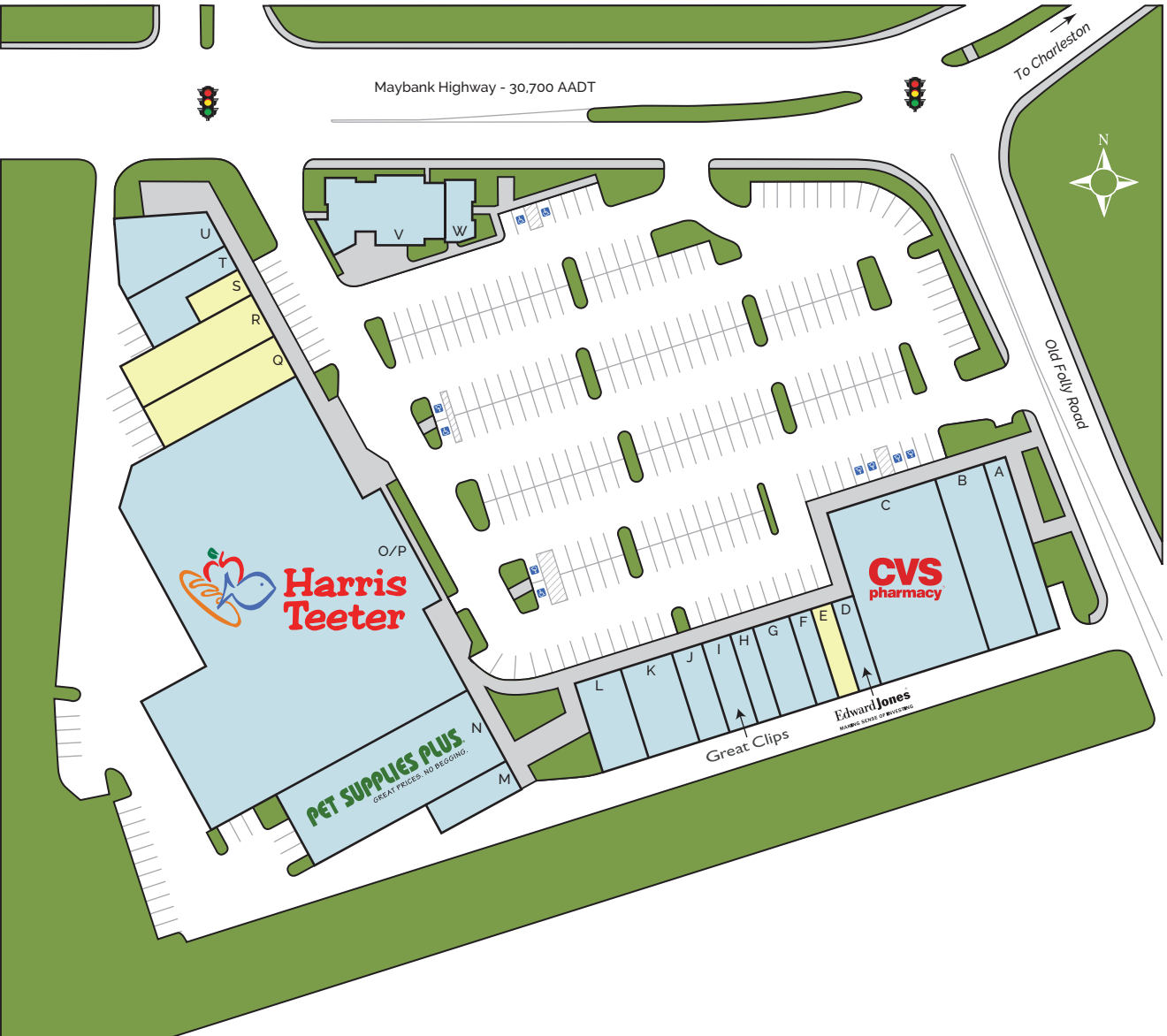
LEASING CONTACT

NAICharleston

Will Sherrod | 843.364.3796 | wsherrod@naicharleston.com

JAMES ISLAND CENTER

1739 Maybank Highway, Charleston, SC 29412



Space	Tenant
A	Barberitos
B	Ammons Dental By Design
C	CVS Pharmacy
D	Edward Jones
E	Available - 900 SF
F	James Island Physical Therapy
G	Athens Restaurant & Grill
H	Tilted Glass
I	Great Clips
J	Labelle Nail Designers
K	Pho Saigon
L	Club Pilates
M	Beech
N	Pet Supplies Plus
O/P	Harris Teeter
Q	Available - 3,000 SF
R	Available - 3,000 SF
S	Available - 713 SF
T	European Wax Center
U	Maple Street Biscuit
V	My Father's Moustache
W	Muddy Waters



6824 Elm Street, Suite 200, McLean, VA 22101
 ph: 703.821.0500 | fax: 703.442.7545 | BeattyCos.com

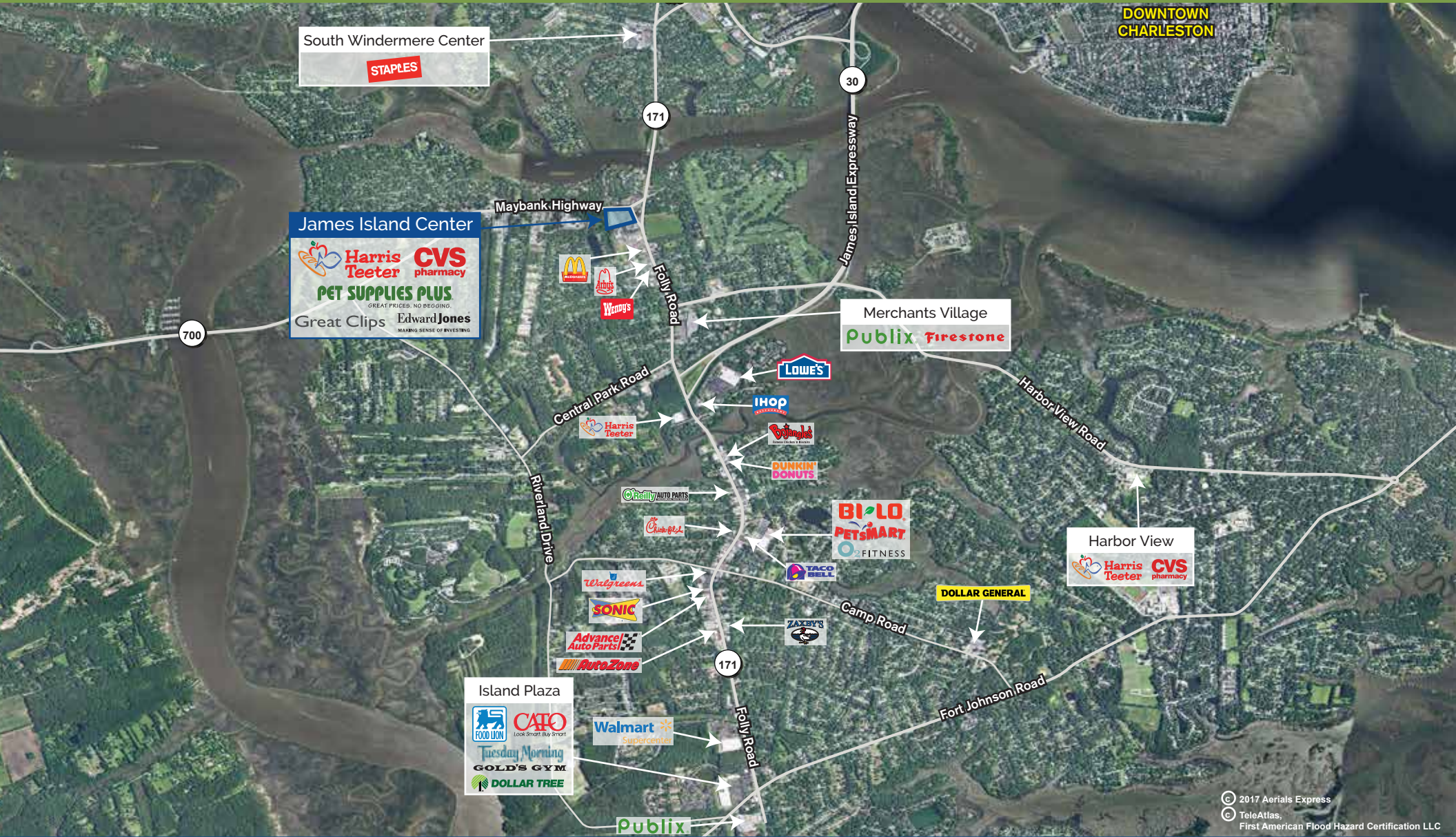
LEASING CONTACT



Will Sherrod | 843.364.3796 | wsherrod@naicharleston.com

JAMES ISLAND CENTER

1739 Maybank Highway, Charleston, SC 29412



© 2017 Aerials Express
 © TeleAtlas,
 First American Flood Hazard Certification LLC



6824 Elm Street, Suite 200, McLean, VA 22101
 ph: 703.821.0500 | fax: 703.442.7545 | BeattyCos.com

LEASING CONTACT

NAI Charleston

Will Sherrod | 843.364.3796 | wsherrod@naicharleston.com