

JAMES ISLAND CENTER

1739 Maybank Highway, Charleston, SC 29412



Retail Space Available:

713 SF | 1,260 SF | 3,200 SF | 7,491 SF

Center Type: Community Center
Retail GLA: 93,131 SF
Year Built: 1975 | Harris Teeter 2015
Features: Signalized Intersection
 Dedicated Turn Lane
 Pylon Sign
Parking: 295 Surface Spaces
Traffic Counts: 23,800 AADT on Maybank Highway
 29,800 AADT on Folly Road
Anchor Tenant:



National/Regional Tenants:



Great Clips

Demographics	1 Mile	3 Mile	5 Mile
Population 2016	6,454	61,635	120,477
Population 2021	6,769	65,900	128,978
Total Households	3,069	26,586	52,778
Average HH Income	\$82,232	\$71,957	\$70,364

James Island Center is located at the intersection of Maybank Highway and Folly Road, a prime corner at a high traffic intersection as you enter James Island from West Ashley. There are several entrances to the property for easy access from both Maybank Highway and Folly Road.

James Island Center was recently renovated, including a brand new Harris Teeter that opened it's doors in November, 2015. Other noteworthy tenants include CVS Pharmacy, Great Clips and Edward Jones.



6824 Elm Street, Suite 200, McLean, VA 22101
 ph: 703.821.0500 | fax: 703.442.7545 | BeattyCos.com

LEASING CONTACT

Elyse Welch, CCIM | 843.203.1111 | EWelch@lee-associates.com
 John Orr, CCIM | 843.793.6974 | JOrr@lee-associates.com
 Lindsey Halter | 843.277.4322 | LHalter@lee-associates.com

JAMES ISLAND CENTER

1739 Maybank Highway, Charleston, SC 29412



Space	Tenant	SF
A	Barberitos	1,800
B	Ammons Dental By Design	4,050
C	CVS Pharmacy	9,150
D	Edward Jones	900
E/F	Willow Salon	1,800
G	Amalfi's Restaurant	1,500
H	Tilted Glass	965
I	Great Clips	1,200
J	City Nail Spa	1,240
K	Pho Saigon	2,100
L	Club Pilates	1,860
M	Available	1,260
N	Available	7,491
O/P	Harris Teeter	41,500
Q/R	Exemplar Fitness	6,000
S	Available	713
T	European Wax Center	1,820
U	Maple Street Biscuit	2,790
V	Available	3,200
W	Muddy Waters	800



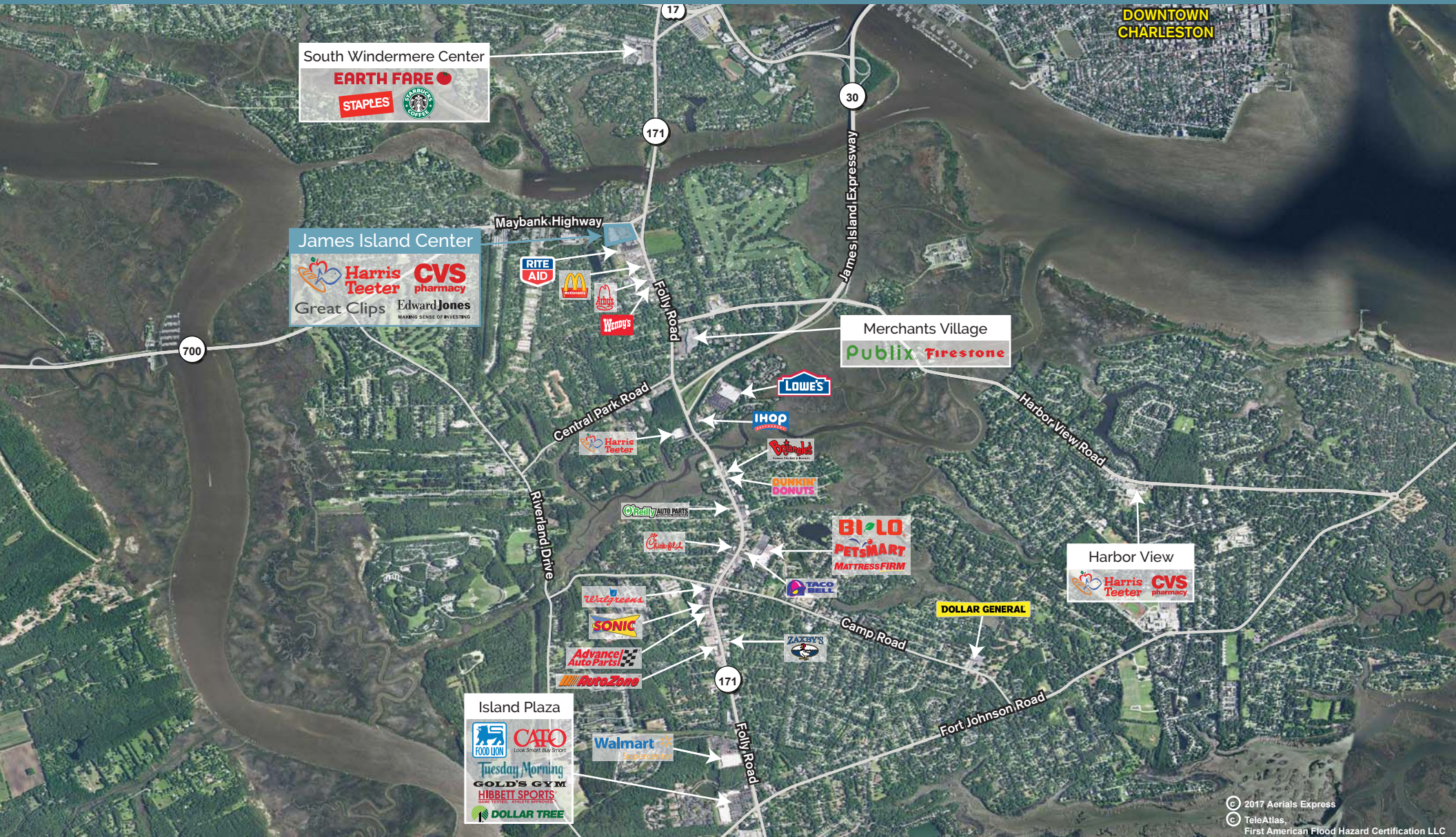
6824 Elm Street, Suite 200, McLean, VA 22101
ph: 703.821.0500 | fax: 703.442.7545 | BeattyCos.com

LEASING CONTACT

Elyse Welch, CCIM | 843.203.1111 | EWelch@lee-associates.com
John Orr, CCIM | 843.793.6974 | JOrr@lee-associates.com
Lindsey Halter | 843.277.4322 | LHalter@lee-associates.com

JAMES ISLAND CENTER

1739 Maybank Highway, Charleston, SC 29412



© 2017 Aerials Express
 © TeleAtlas,
 First American Flood Hazard Certification LLC



6824 Elm Street, Suite 200, McLean, VA 22101
 ph: 703.821.0500 | fax: 703.442.7545 | BeattyCos.com

LEASING CONTACT

Elyse Welch, CCIM | 843.203.1111 | EWelch@lee-associates.com
 John Orr, CCIM | 843.793.6974 | JOrr@lee-associates.com
 Lindsey Halter | 843.277.4322 | LHalter@lee-associates.com