

JAMES ISLAND CENTER

1739 Maybank Highway, Charleston, SC 29412



James Island Center is located at the intersection of Maybank Highway and Folly Road, a prime corner at a high traffic intersection as you enter James Island from West Ashley. There are several entrances to the property for easy access from both Maybank Highway and Folly Road.

Anchor tenants include Harris Teeter and CVS. Other noteworthy tenants include Pet Supplies Plus, Great Clips and Edward Jones.

Retail Space Available:

713 SF | 900 SF | 3,000 SF | 3,000 SF

Center Type: Community Center
Retail GLA: 90,993 SF
Year Built: 1975 | Harris Teeter 2015
Features: Signalized Intersection
Dedicated Turn Lane
Pylon Sign
Parking: 295 Surface Spaces
Traffic Counts: 30,700 AADT on Maybank Highway
29,600 AADT on Folly Road
Anchor Tenant:



National/Regional Tenants:

PET SUPPLIES PLUS
GREAT PRICES. NO BEGGING.

Edward Jones
MAKING SENSE OF INVESTING
Great Clips

Demographics	1 Mile	3 Mile	5 Mile
Population 2021	7,591	65,720	131,244
Population 2026	8,259	69,923	143,549
Total Households	3,583	28,236	57,248
Average HH Income	\$110,286	\$104,090	\$99,438



6824 Elm Street, Suite 200, McLean, VA 22101
ph: 703.821.0500 | fax: 703.442.7545 | BeattyCos.com

LEASING CONTACT

NAICharleston

Will Sherrod | 843.364.3796 | wsherrod@naicharleston.com

JAMES ISLAND CENTER

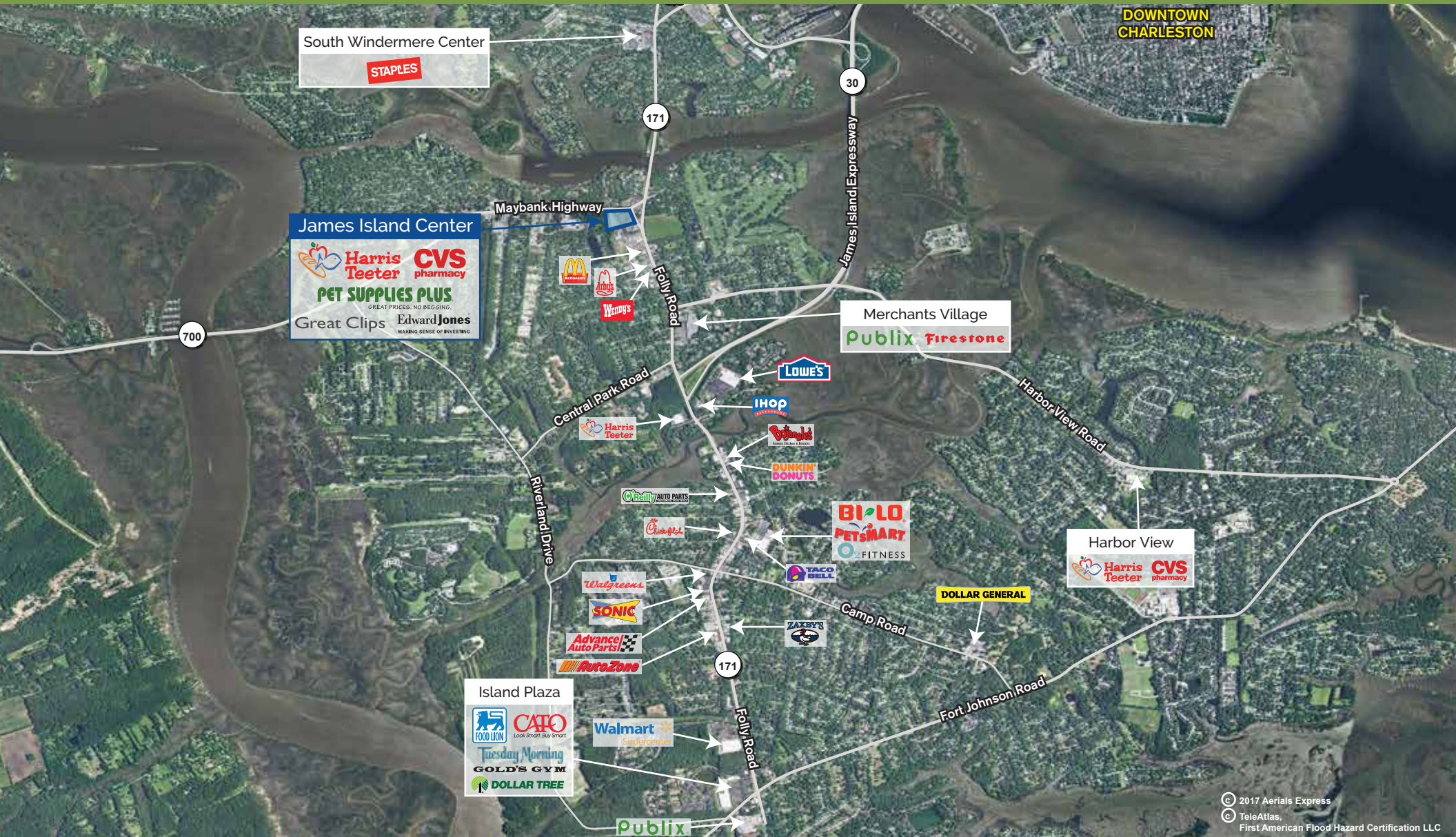
1739 Maybank Highway, Charleston, SC 29412



Space	Tenant
A	Barberitos
B	Ammons Dental By Design
C	CVS Pharmacy
D	Edward Jones
E	Available - 900 SF
F	James Island Physical Therapy
G	Athens Restaurant & Grill
H	Tilted Glass
I	Great Clips
J	Labelle Nail Designers
K	Pho Saigon
L	Club Pilates
M	Beech
N	Pet Supplies Plus
O/P	Harris Teeter
Q	Available - 3,000 SF
R	Available - 3,000 SF
S	Available - 713 SF
T	European Wax Center
U	Maple Street Biscuit
V	My Father's Moustache
W	Muddy Waters

JAMES ISLAND CENTER

1739 Maybank Highway, Charleston, SC 29412



© 2017 Aerials Express
 © TeleAtlas,
 First American Flood Hazard Certification LLC



6824 Elm Street, Suite 200, McLean, VA 22101
 ph: 703.821.0500 | fax: 703.442.7545 | BeattyCos.com

LEASING CONTACT

NAI Charleston

Will Sherrod | 843.364.3796 | wsherrod@naicharleston.com