

CROWFIELD VILLAGE CENTER

431 St. James Avenue, Goose Creek, SC 29445



Retail Space Available:

100% Leased

Center Type: Community Center

Retail GLA: 67,683 SF

Year Built: 1992

Features: Signalized Intersection
Pylon Sign
Drive Thru

Parking: 365 Surface Spaces

Traffic Counts: 40,000 AADT on St. James Avenue

Anchor Tenants:



National/Regional Tenants:



Neighboring Tenants:



Demographics	1 Mile	3 Mile	5 Mile
Population 2023	8,369	56,045	126,020
Population 2028	8,703	59,103	133,142
Total Households	3,149	21,225	47,799
Average HH Income	\$95,862	\$96,360	\$92,172

Crowfield Village Center is a community center located on the major thoroughfare in Goose Creek, South Carolina. Goose Creek is a community with small town southern character and a diverse and thriving population just a short drive north of Charleston.

Crowfield Village Center is anchored by Bigs Lots and CVS, as well as shadow anchored by Lidl, the first in the Charleston area and one of the first 100 in the United States. Other national retailers located along St. James Avenue include Walmart and a Walmart Neighborhood Market, Lowe's, Publix, Bi-Lo, Save A Lot, Dollar Tree and Dollar General.



6824 Elm Street, Suite 200, McLean, VA 22101
ph: 703.821.0500 | fax: 703.442.7545 | BeattyCos.com

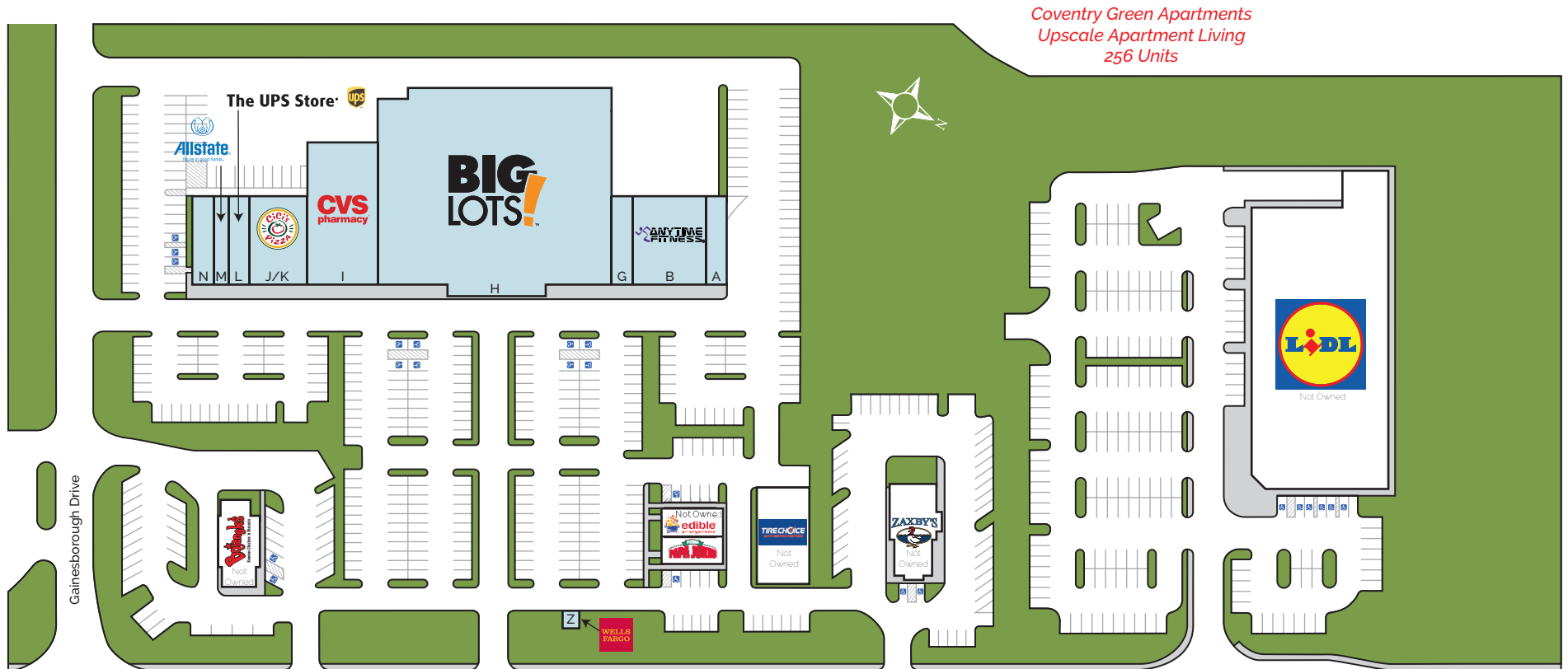
LEASING CONTACT

NAI Charleston

Will Sherrod | 843.364.3796 | wsherrod@naicharleston.com

CROWFIELD VILLAGE CENTER

431 St. James Avenue, Goose Creek, SC 29445



Coventry Green Apartments
Upscale Apartment Living
256 Units

Gainesborough Drive

St. James Avenue (U.S. Route 176) - 40,000 AADT

Space	Tenant
431 A	Tommy's Cleaners
431 B	Anytime Fitness
431 G	Creekside Veterinary Clinic
431 H	Big Lots

Space	Tenant
431 I	CVS Pharmacy
431 J/K	Cici's Pizza
431 L	The UPS Store

Space	Tenant
431 M	Allstate Insurance
431 N	Chinese Express
431 Z	Wells Fargo (ATM)



6824 Elm Street, Suite 200, McLean, VA 22101
ph: 703.821.0500 | fax: 703.442.7545 | BeattyCos.com

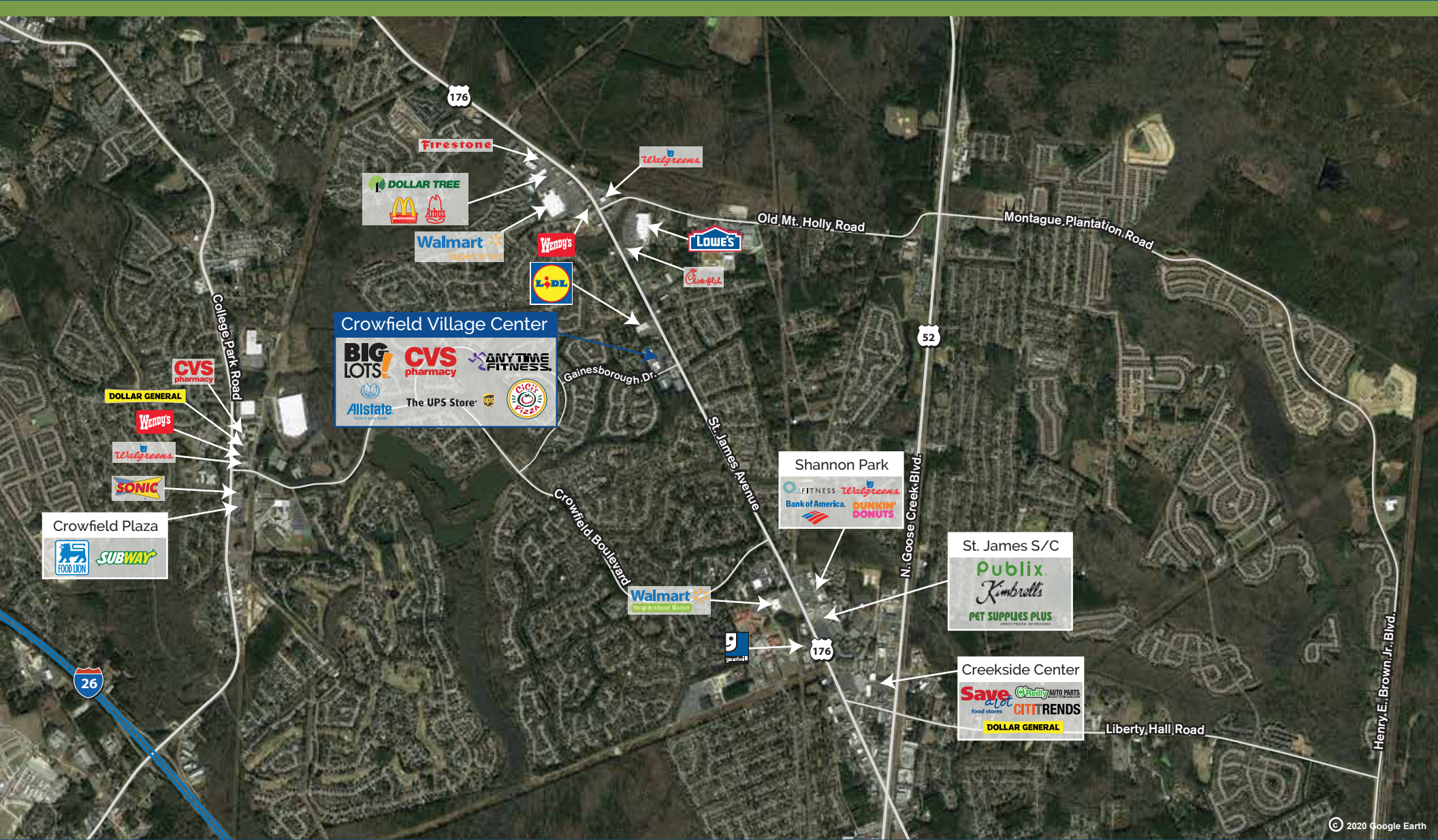
LEASING CONTACT

NAICharleston

Will Sherrod | 843.364.3796 | wsherrod@naicharleston.com

CROWFIELD VILLAGE CENTER

431 St. James Avenue, Goose Creek, SC 29445



© 2020 Google Earth



6824 Elm Street, Suite 200, McLean, VA 22101
 ph: 703.821.0500 | fax: 703.442.7545 | BeattyCos.com

LEASING CONTACT

NAI Charleston

Will Sherrod | 843.364.3796 | wsherrod@naicharleston.com