

CROWFIELD VILLAGE CENTER

431 St. James Avenue, Goose Creek, SC 29445



Retail Space Available:

100% Leased

Center Type: Community Center
Retail GLA: 67,683 SF
Year Built: 1992
Features: Signalized Intersection
 Pylon Sign
 Drive Thru
Parking: 365 Surface Spaces
Traffic Counts: 40,000 AADT on St. James Avenue
Anchor Tenants:



National/Regional Tenants:



Neighboring Tenants:



Crowfield Village Center is a community center located on the major thoroughfare in Goose Creek, South Carolina. Goose Creek is a community with small town southern character and a diverse and thriving population just a short drive north of Charleston.

Crowfield Village Center is anchored by Bigs Lots and CVS, as well as shadow anchored by Lidl, the first in the Charleston area and one of the first 100 in the United States. Other national retailers located along St. James Avenue include Walmart and a Walmart Neighborhood Market, Lowe's, Publix, Bi-Lo, Save A Lot, Dollar Tree and Dollar General.

Demographics	1 Mile	3 Mile	5 Mile
Population 2021	9,082	51,725	122,568
Population 2026	9,785	56,561	135,227
Total Households	3,397	19,105	45,736
Average HH Income	\$91,390	\$83,237	\$78,397



6824 Elm Street, Suite 200, McLean, VA 22101
 ph: 703.821.0500 | fax: 703.442.7545 | BeattyCos.com

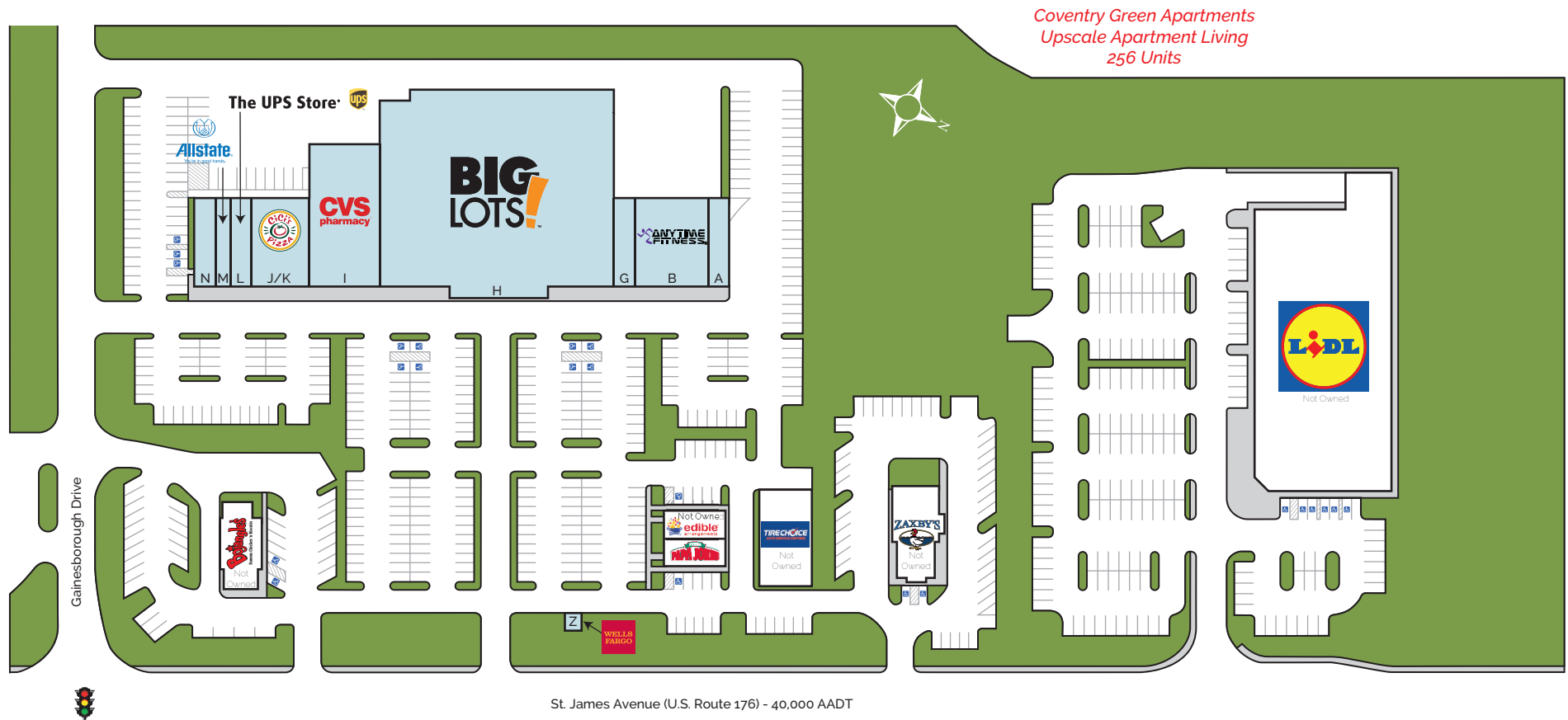
LEASING CONTACT

NAICharleston

Will Sherrod | 843.364.3796 | wsherrod@naicharleston.com

CROWFIELD VILLAGE CENTER

431 St. James Avenue, Goose Creek, SC 29445



Space	Tenant
431 A	Tommy's Cleaners
431 B	Anytime Fitness
431 G	Creekside Veterinary Clinic
431 H	Big Lots

Space	Tenant
431 I	CVS Pharmacy
431 J/K	Cici's Pizza
431 L	The UPS Store

Space	Tenant
431 M	Allstate Insurance
431 N	Chinese Express
431 Z	Wells Fargo (ATM)



6824 Elm Street, Suite 200, McLean, VA 22101
ph: 703.821.0500 | fax: 703.442.7545 | BeattyCos.com

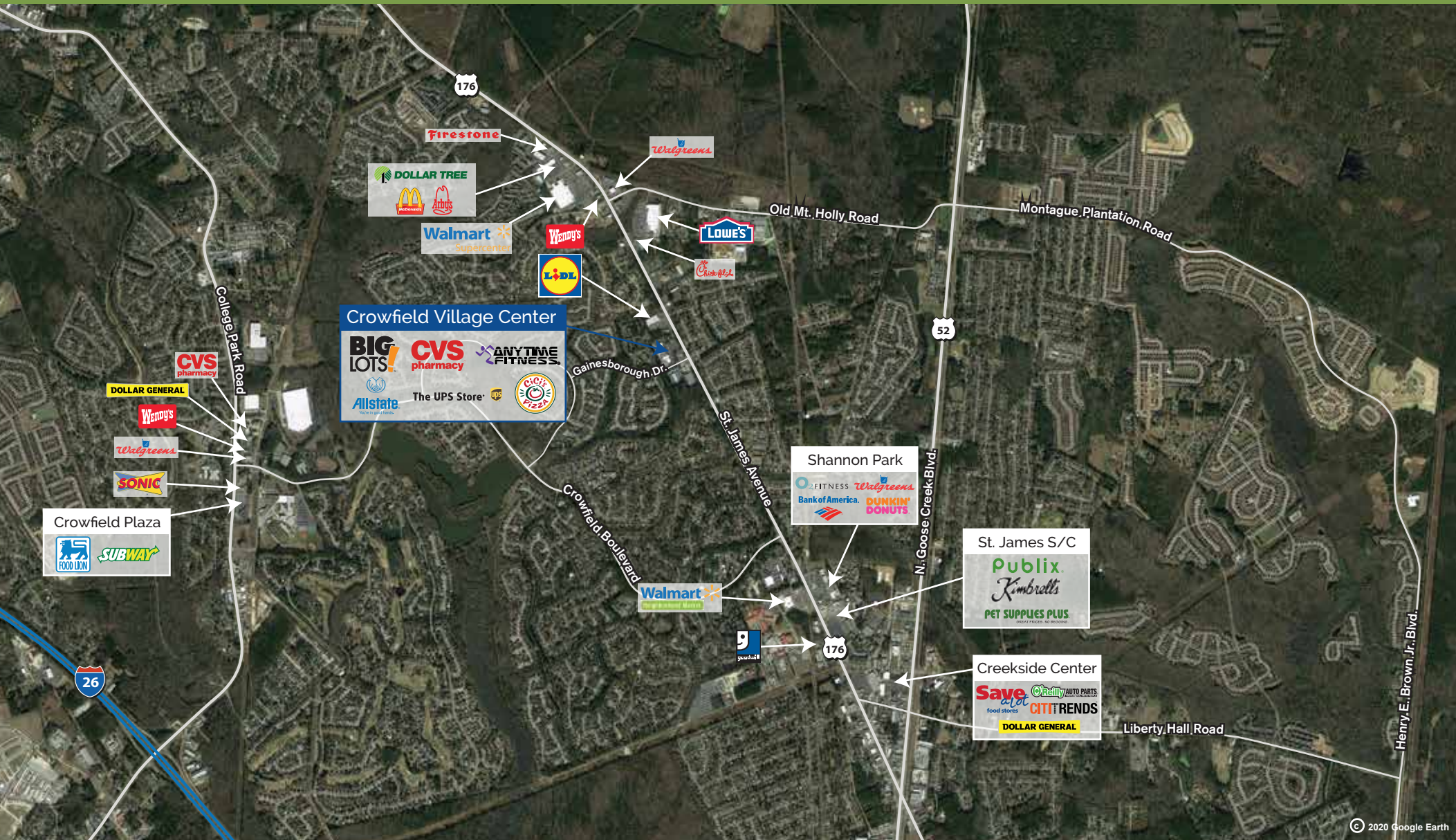
LEASING CONTACT

NAICharleston

Will Sherrod | 843.364.3796 | wsherrod@naicharleston.com

CROWFIELD VILLAGE CENTER

431 St. James Avenue, Goose Creek, SC 29445



6824 Elm Street, Suite 200, McLean, VA 22101
ph: 703.821.0500 | fax: 703.442.7545 | BeattyCos.com

LEASING CONTACT

NAI Charleston

Will Sherrod | 843.364.3796 | wsherrod@naicharleston.com