

# CROWFIELD VILLAGE CENTER

431 St. James Avenue, Goose Creek, South Carolina 29445



## Retail Space Available:

1,600 SF

**Center Type:** Community Center  
**Retail GLA:** 67,712 SF  
**Year Built:** 1992  
**Features:** Dedicated Turn Lane  
 Pylon Sign  
 Signalized Intersection  
**Parking:** 365 Surface Spaces  
**Traffic Counts:** 30,500 VPD  
**Anchor Tenants:**



Demographics	1 Mile	3 Mile	5 Mile
Population 2013	8,530	46,254	102,030
Population 2018	9,565	52,210	113,844
Total Households	3,190	17,142	37,835
Average HH Income	\$78,119	\$65,432	\$59,342

Goose Creek was established in 1961 and is situated at the southern end of Berkeley County. Over 36,000 people live in Goose Creek. St. James Avenue is the main retail thoroughfare in Goose Creek with area businesses including Publix, Wal-Mart, Bi-Lo, Save-A-Lot and Lowe's.

Heading West on Hwy 176, the center is located on the left at the intersection of Gainsborough Drive and St. James Avenue.



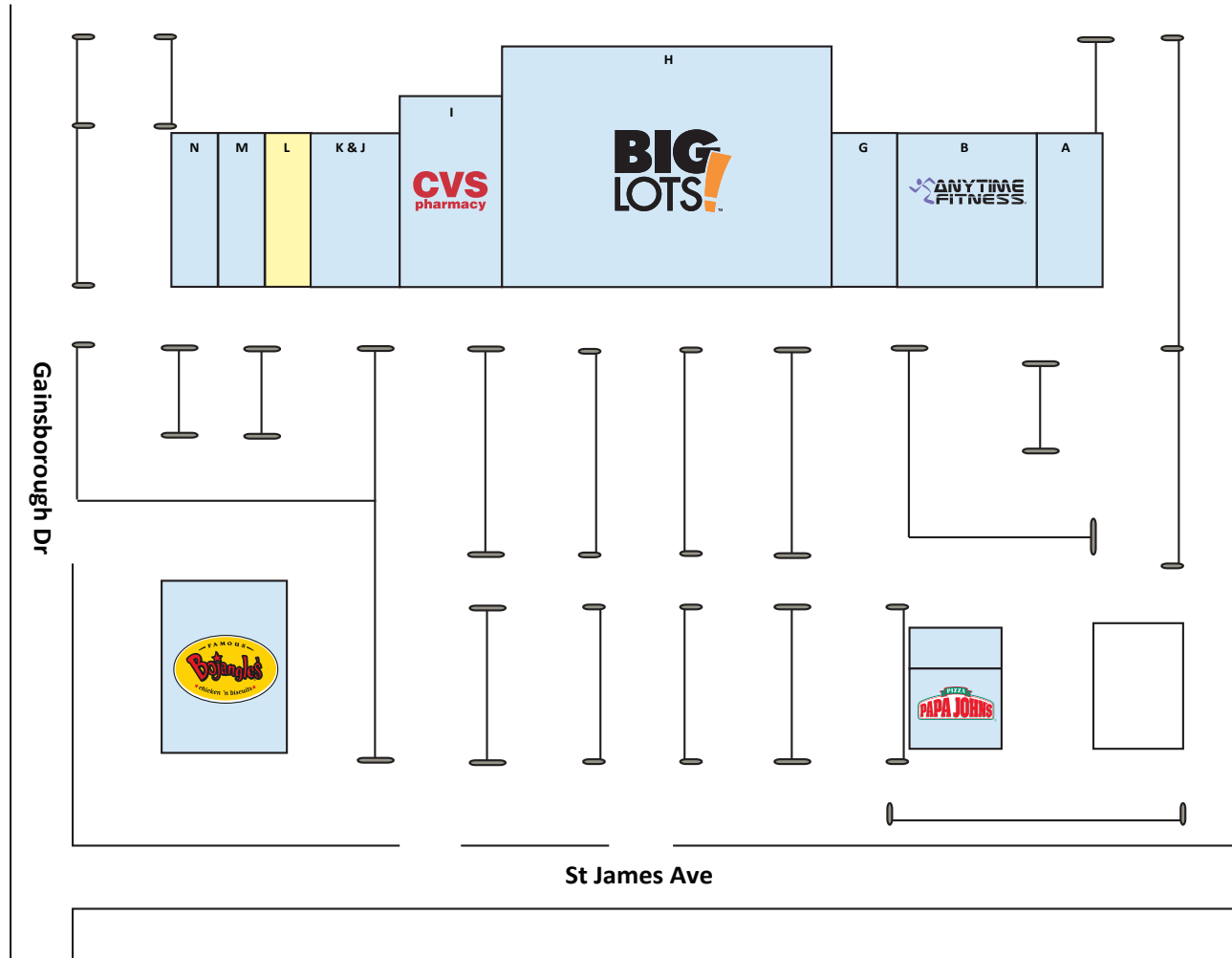
6824 Elm Street, Suite 200, McLean, VA 22101  
 ph: 703.821.0500 | fax: 703.442.7545 | BeattyCos.com

## LEASING CONTACT

Vitré Stephens | 843.513.7555 | vitre.stephens@avisonyoung.com  
 Avery Homes | 843.725.7200 | avery.homes@avisonyoung.com

# CROWFIELD VILLAGE CENTER

431 St. James Avenue, Goose Creek, South Carolina 29445

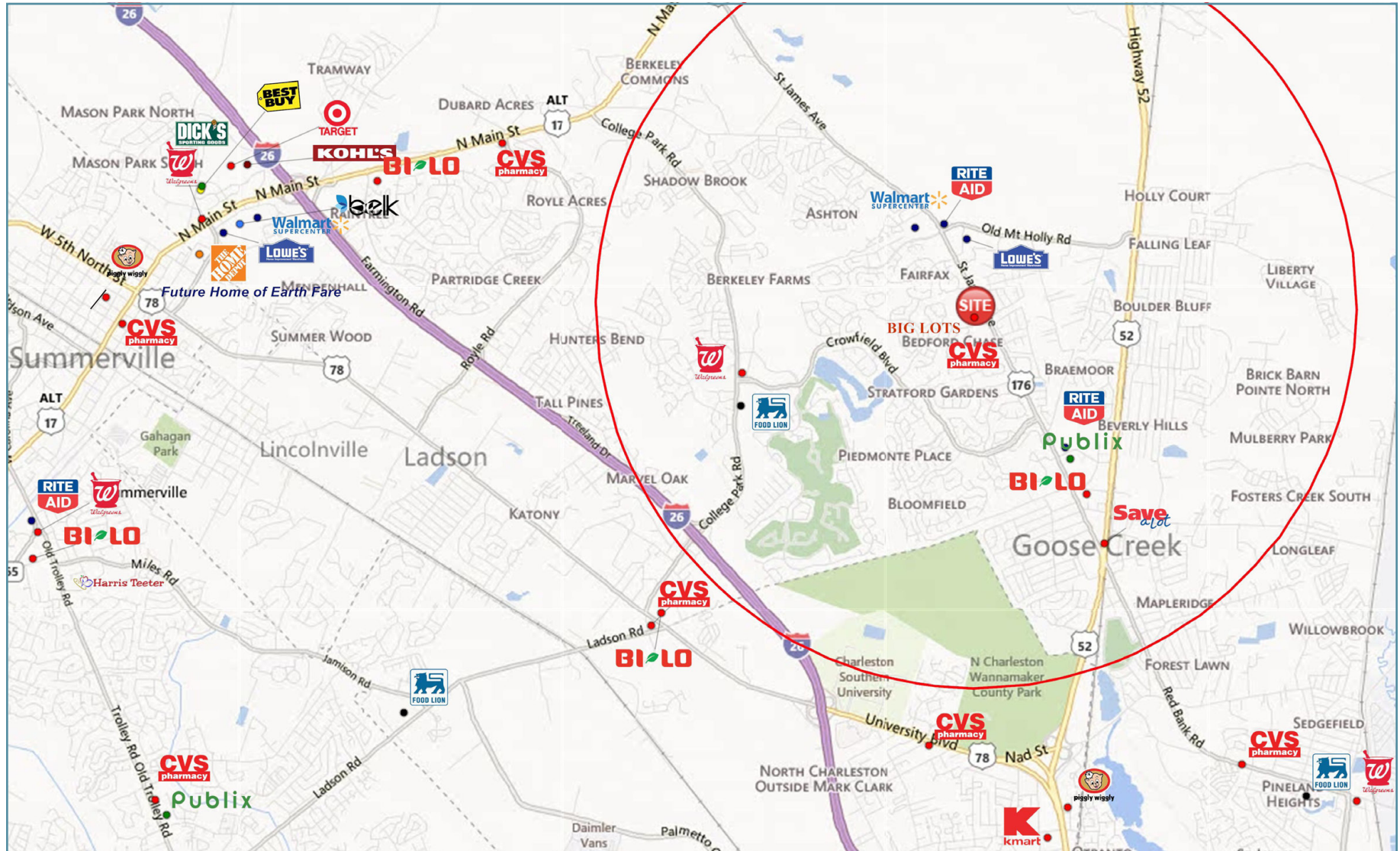


Space	Tenant	SF
431A	Tommy's Cleaners	1,600
431B	Anytime Fitness	5,600
431G	Creekside Veterinary Clinic	1,600
431H	Big Lots	41,388
431I	CVS Pharmacy	8,450
431J/K	Academy of Martial Arts	4,400
431L	Available	1,600
431M	Blush Hair Salon	1,111
431N	Chinese Express	1,660

## LEASING CONTACT

# CROWFIELD VILLAGE CENTER

431 St. James Avenue, Goose Creek, South Carolina 29445



## LEASING CONTACT